

# Quest NBS & CIMSPA Conference 2017

## **Safeguarding in Leisure:** *Pressures and Responsibilities*

**Nick Slinn**

Senior Consultant

**NSPCC** Child Protection in Sport Unit



# Safeguarding in Leisure:

## *Pressures and Responsibilities*

- The Child Protection in Sport Unit (CPSU)
  - The current climate
  - Sport and leisure: safeguarding challenges and responsibilities
- 
- Positive steps
  - Questions?



# The CPSU's Mission:

***to build the capacity of sports to  
safeguard children and young people in  
and through sport  
and  
to enable sport and physical activity  
organisations to lead the way in keeping  
children safe from harm.***



**Child Protection in Sport Unit**

**NSPCC**

# The CPSU's Partnerships

Based within NSPCC

Support to around 200 sports organisations  
(mainly NGBs and CSPs)

Funding/Partnerships with:

- Sport England
  - UK Sport
  - Sport NI
  - Sport Wales
- ...and dotted line to Scotland

Youth Sport Trust (UK School Games)



# What we do



- Benchmark sports organisations against safeguarding standards, including post-standards framework
- Training, consultancy, forums and support to safeguarding leads and management groups
- Webinars – for all
- Website: resources – for all
- Contribute to Sport Safeguarding Partnerships/task groups
- Lobby and campaign
- Provide sport/physical activity context for wider consultations, legislation and government guidance
- Work on identified themes (eg talented athletes, DBS, martial arts, leisure/facilities).



# The current climate

**Government sport strategy included a Duty of Care review by Dame Tanni Grey-Thompson:** publication expected soon, to be followed by government's response.

## Recent football and other historical abuse allegations:

- Arrangements in sport and recreation now under public scrutiny
- All linked government departments reviewing safeguarding arrangements
- Incidents will receive greater interest/scrutiny
- Statutory agencies more aware of, and seeking engagement with, the sector
- LSCBs seeking assurances locally
- Public/parents more aware/concerned
- NGBs emphasising requirements and undertaking QA activities

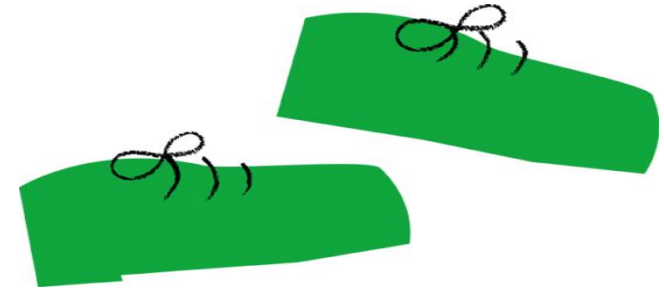


# Identified gaps/risks



- Unregulated or unaffiliated groups/clubs/organisations
- Inconsistent messages/requirements from schools
- Deaf and disabled children
- Talented/elite athletes
- Safeguarding adults
- Confusion and gaps in DBS process
- Coaches not included in abuse of position of trust legislation
- Need to strengthen case management processes
- Absence of consistent, coherent safeguarding guidance and practice within leisure/facilities

# Emerging themes



## Regulatory

- Governance code for public funded bodies and Duty of Care review
- Issues re DBS eligibility and process
- Extension of abuse of position of trust to coaches **#TrustToLead**
- Revise Working Together guidance

## Practice

- Consistent safeguarding messages, practice and response: education, leisure, facilities
- Address unregulated activity providers

## Cultural change

- Implementing effective safeguarding requires commitment by managers, staff, volunteers and parents: to develop a culture of safeguarding.



# Sport , Recreation and Leisure Facilities: potential implications

1<sup>ST</sup>

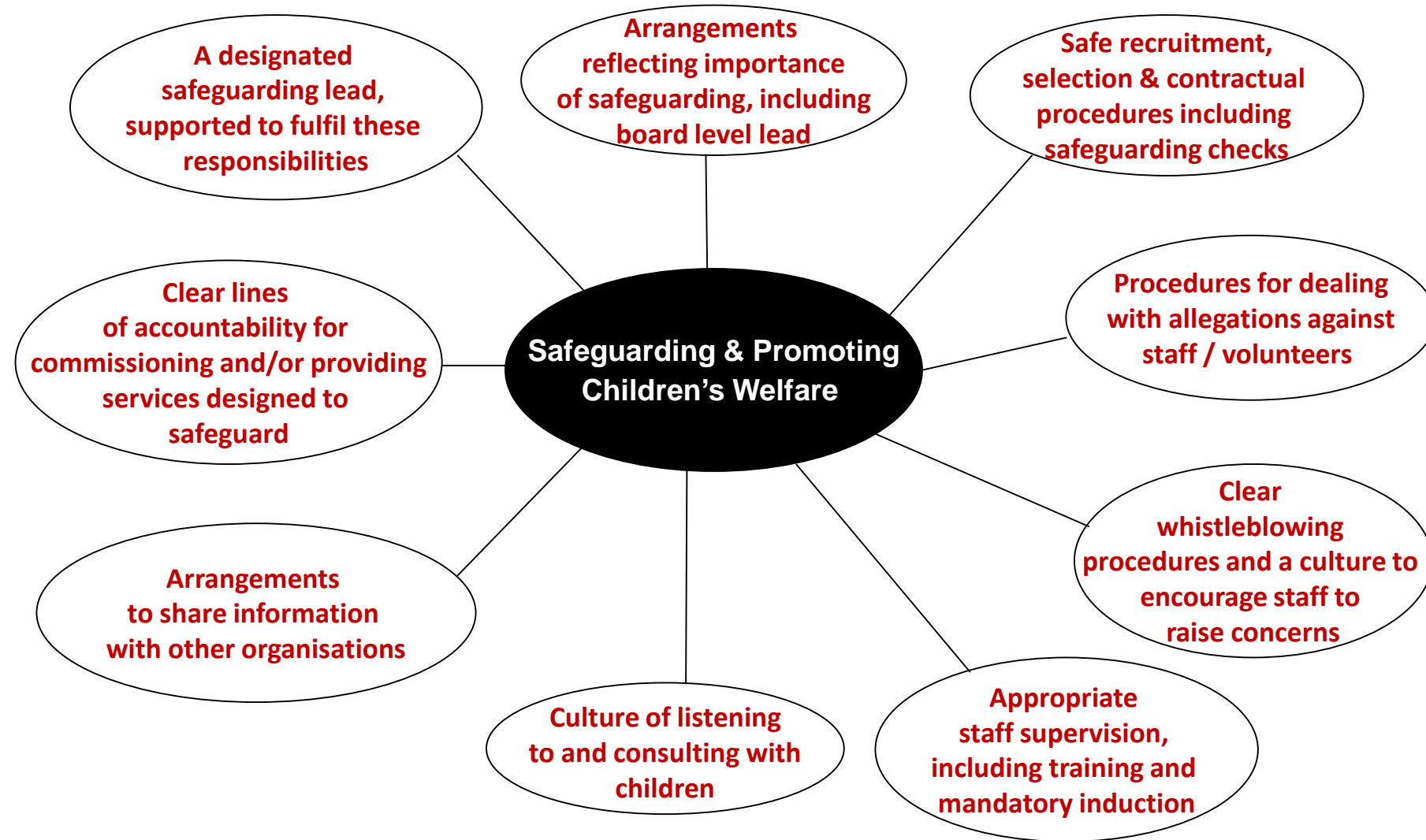
- Broadening of discussions/strategies to include leisure, recreation and physical activity (not just sport)
- Tie leisure/facilities into interagency guidance
- Establish consistent guidance and requirements – supported by toolkits/information/resources
- Ensure safeguarding guidance and language reflects the operational context
- Include leisure/facilities in strategic safeguarding planning/activities
- Build in a mandatory safeguarding QA system
- Address facility-specific issues (for example: staff training; third party usage; changing area safety; and photography)
- Resources (available), cost (time/financial) and commitment required.



# Safeguarding Responsibilities and (some) existing supports



# Organisations should have in place arrangements reflecting the importance of safeguarding and promoting the welfare of children:





# Quest 2016 – Gplus 30

## Safeguarding for Children and Young People

### Guidance Notes

Issue 4 – July 2016

#### Outcomes

- Ensure high quality experiences of sport and physical activity for children and young people.
- Safeguarding Standards are in place, are reviewed and continuously improved upon.
- Safeguarding practice is embedded at all levels within the organisation.
- Integrate the involvement of children and young people in the development and implementation of safeguarding processes.

#### Suggested Guidance

##### GOVERNMENT GUIDANCE

Working together to Safeguard Children - A guide to inter-agency working to safeguard and promote the welfare of children (March 2015)

[https://www.gov.uk/government/uploads/system/uploads/attachment\\_data/file/419595/Working\\_Together\\_to\\_Safeguard\\_Children.pdf](https://www.gov.uk/government/uploads/system/uploads/attachment_data/file/419595/Working_Together_to_Safeguard_Children.pdf)

Keeping Children Safe in Education are new guidelines that come into effect on 5 September 2016

<https://www.gov.uk/government/publications/keeping-children-safe-in-education-2>

##### CHILD PROTECTION IN SPORT UNIT (CPSU)

- Safeguarding advice from the Child Protection in Sport Unit which includes all you need to know about developing safeguarding policies and a resource library covering: policies; best practice briefing papers; tools; templates; research, videos and publications. It also includes an excellent Self Assessment tool.

Link to the home page: <https://thecpsu.org.uk/>

Link to the resource library: <https://thecpsu.org.uk/resource-library/>



Policy	Implementation & Monitoring	Procedures & Systems
<p><b>Areas covered:</b></p> <ul style="list-style-type: none"> <li>Do you have a safeguarding child protection policy?</li> <li>Does it protect the welfare of children?</li> <li>Is the policy clear &amp; easy to understand?</li> <li>Is the policy published effectively?</li> <li>Yes</li> </ul>	<p><b>Areas covered:</b></p> <ul style="list-style-type: none"> <li>What steps will be taken to safeguard children?</li> <li>Are measures available to help employees/club?</li> <li>Are regular reports put in place?</li> <li>Will young people &amp; parents be involved?</li> <li>Are safeguarding concerns or complaints recorded &amp; monitored?</li> <li>Yes</li> </ul>	<p><b>Areas covered:</b></p> <ul style="list-style-type: none"> <li>Is it clear what to do if there are concerns about a child?</li> <li>Is there guidance on safeguarding, social media, and a whistleblowing?</li> <li>Can everyone access the child protection procedures?</li> <li>Is there a designated safeguarding person in the organisation?</li> <li>Are complaints about abusive behaviour dealt with effectively?</li> <li>Yes</li> </ul>
Prevention	Access To Advice & Support	Education & Training
<p><b>Areas covered:</b></p> <ul style="list-style-type: none"> <li>Are there procedures for recruiting people working with children?</li> <li>Are there clear steps to raise concerns about unacceptable behaviour by staff/volunteers?</li> <li>Is there a safeguarding plan for clubs &amp; safeguarding children?</li> <li>Do you ensure that children are always supervised when you provide activities?</li> <li>Yes</li> </ul>	<p><b>Areas covered:</b></p> <ul style="list-style-type: none"> <li>Do children have information about where to get help &amp; support?</li> <li>Do those with designated safeguarding roles have access to specialist advice &amp; information?</li> <li>Are contacts established with statutory child protection agencies?</li> <li>Is support available to individuals involved in an investigation or complaint?</li> <li>Yes</li> </ul>	<p><b>Areas covered:</b></p> <ul style="list-style-type: none"> <li>Is there an induction process for staff &amp; volunteers to safeguard children?</li> <li>Are all staff &amp; volunteers provided with relevant safeguarding training?</li> <li>Are children provided with information on where to go for help &amp; support?</li> <li>Is support available to individuals affected by safeguarding concerns?</li> <li>Yes</li> </ul>
Codes Of Practice & Behaviour	Communication	Equality
<p><b>Areas covered:</b></p> <ul style="list-style-type: none"> <li>Do you have a code of conduct?</li> <li>Is guidance available on expected standards of behaviour?</li> <li>Is there guidance on expected behaviour of children towards other children?</li> <li>Are there processes for dealing with unacceptable behaviour?</li> <li>Do senior management ensure children are supported &amp; rewarded?</li> <li>Yes</li> </ul>	<p><b>Areas covered:</b></p> <ul style="list-style-type: none"> <li>Is the organisation socially committed to safeguarding?</li> <li>Are young people aware of their rights to safe from abuse?</li> <li>Do young people &amp; parents know where to go for help with concerns about child abuse/safeguarding?</li> <li>Is information provided clear and easy for everyone to understand?</li> <li>Does everyone know who to contact if they have concerns?</li> <li>Yes</li> </ul>	<p><b>Areas covered:</b></p> <ul style="list-style-type: none"> <li>Is your safeguarding policy clear that all children have equal rights to protection?</li> <li>Are staff/volunteers supported to recognise &amp; respond to additional vulnerability of some children?</li> <li>Are your codes of conduct clear that discrimination, offence &amp; unfair treatment is unacceptable?</li> <li>Are complaint procedures fair &amp; open to challenge through an appeal process?</li> <li>Yes</li> </ul>

# Sport and leisure facilities

Last updated: 03 Jun 2016

Sport and leisure facilities

Unaccompanied children

Implementing an unaccompanied child policy

Third-party use of facilities

Resources



**Children and young people should be able to enjoy taking part in activities at sport and leisure facilities safely.**

To provide a safe environment and positive experience for young users, it's essential that sport and leisure facility operators implement a range of safeguarding policies and procedures. These should address the facility's particular structure, operation and use.

Need help dealing with a concern?

All concerns should be discussed with your club welfare officer (designated person for safeguarding at your club) and reported in accordance with your national governing body's (NGB) policy and procedures.

**Find out what to do**

Sign up to the **CPSU** newsletter



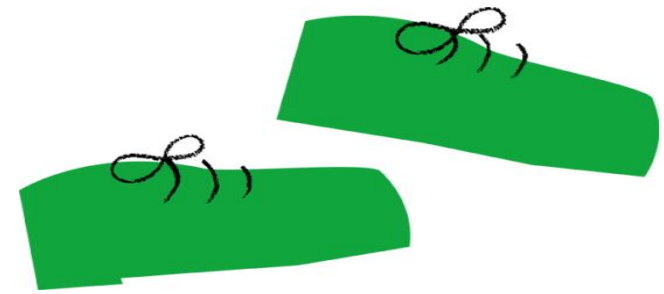
# Do you have in place....

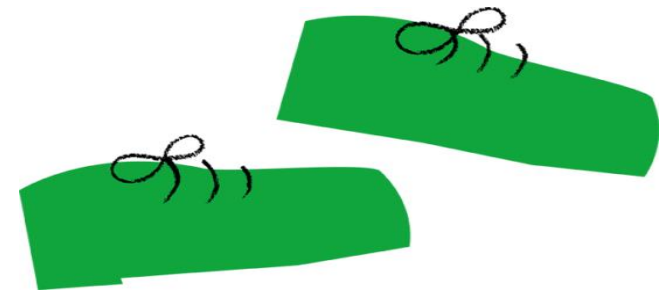


- A clear organisational safeguarding policy addressing all aspects of facility operation that impact on children?
- A system to respond to abuse and poor practice concerns (staff or third parties)?
- Clear behaviour guidelines for staff?
- Trained/supported designated safeguarding leads?
- Safeguarding requirements for clubs/groups regularly using facility?
- Safeguarding training for all different facility roles?
- Information available for children, spectators, parents and 3<sup>rd</sup> party users?
- Links to local statutory and sports networks?



# Questions?





**[www.thecpsu.org.uk](http://www.thecpsu.org.uk)**



**@TheCPSU**

**Email 'Subscribe' to  
[cpsu@nspcc.org.uk](mailto:cpsu@nspcc.org.uk) for  
e-newsletter**