

BLENDed LIFEguarding

Harmonizing Technology and the Lifeguards role to improve swimmer safety and increase efficiency

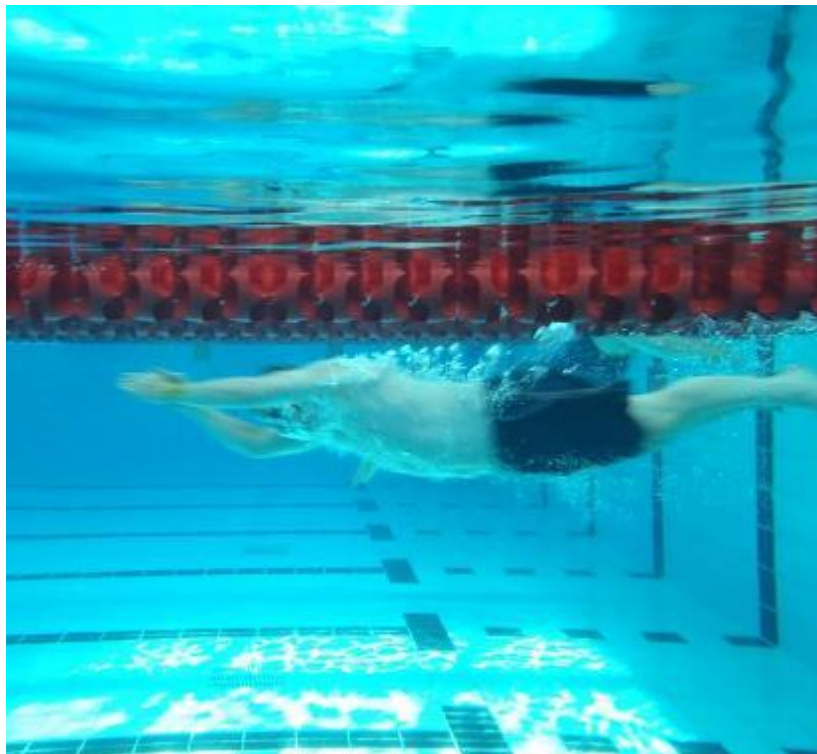
[LEARN MORE](#)

have a tendency to remain unchanged

The UK's leading manufacturer, supplier and installer of Lifeguards
"Drowning Detection Systems and Drowning Prevention Technology"

We have a team of staff with combined decades of experience within the leisure field.

As recognised industry experts we specialise in "Blended Lifeguarding" technological solution for your swimming pool should it be through the provision of Poolview Plus+™, Poolview™ or SenTag, Drowning Detection Systems and Drowning Prevention Systems.



Robin McGloughlin
Director
Poolview Limited

Tel +44 (0) 7768 74 6789
www.poolview.co.uk



Drowning Prevention and Detection Technologies



Poolview Limited
Robin McGloughlin
Tel +44 (0) 7768 74 6789
www.poolview.co.uk

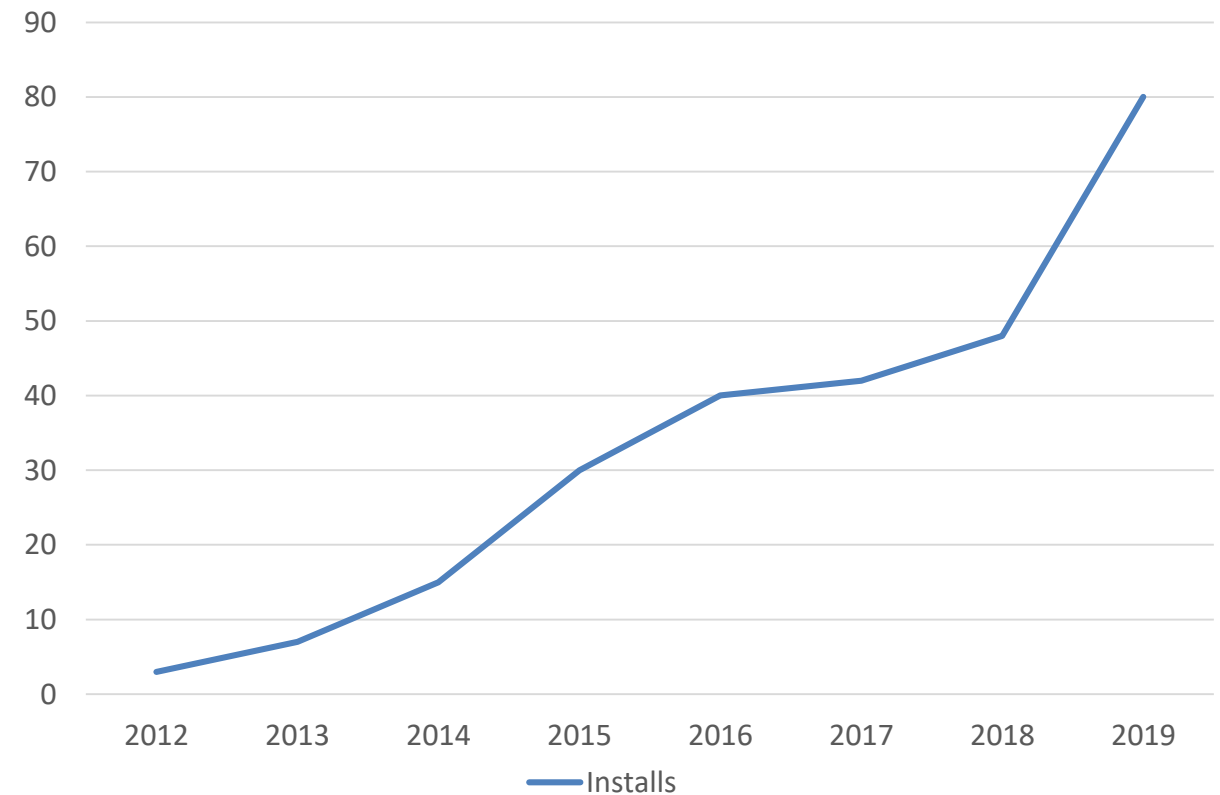


Technology cannot totally replace Lifeguards!



2012 - 3
2013 - 7
2014 - 15
2015 - 30
2016 - 40
2017 - 42
2018 - 48 (44 detection)
2019 - 80 projected

UK Technology Installations





Drowning Prevention & Detection Technology

4 Options

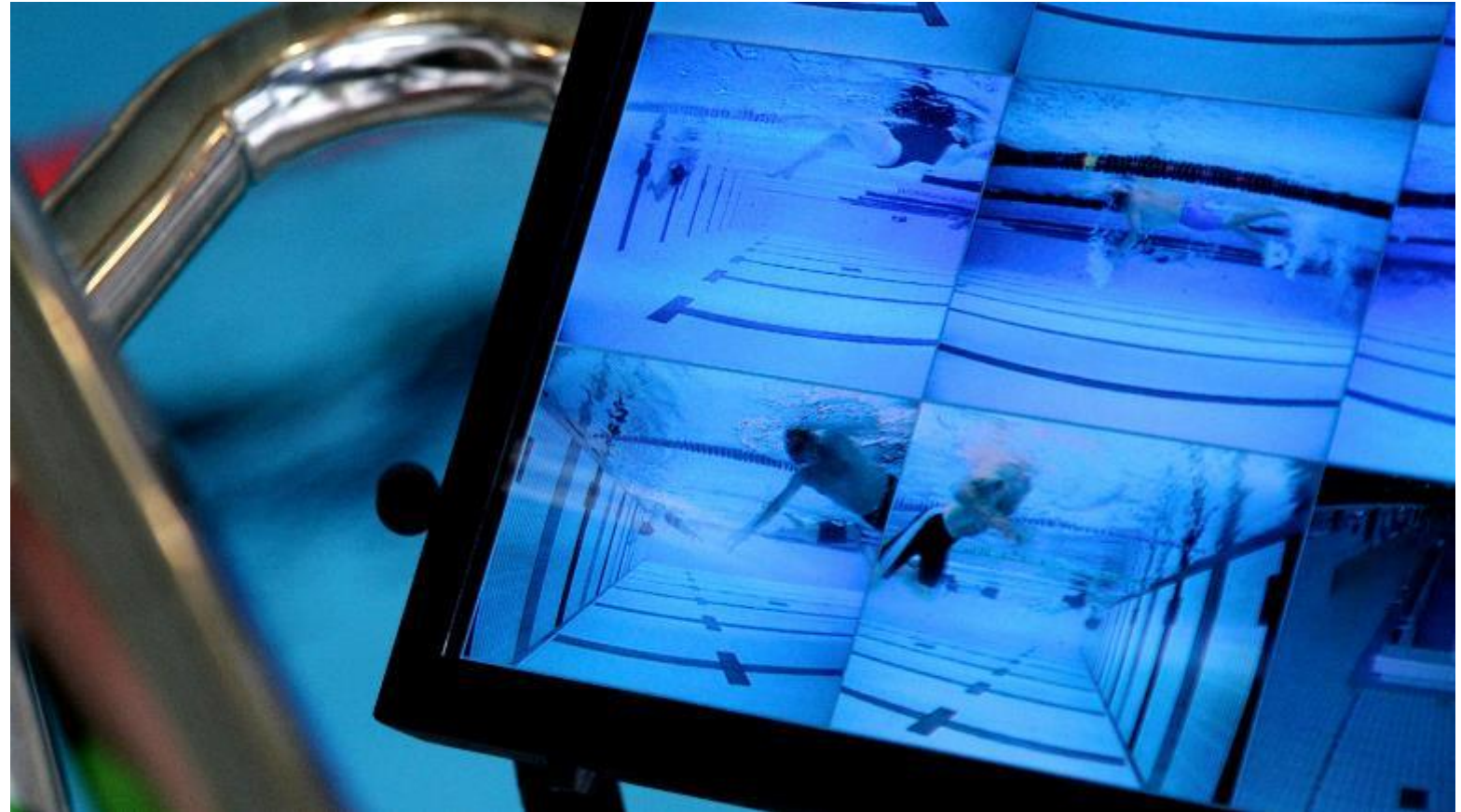
Option 1

Wearable Technology



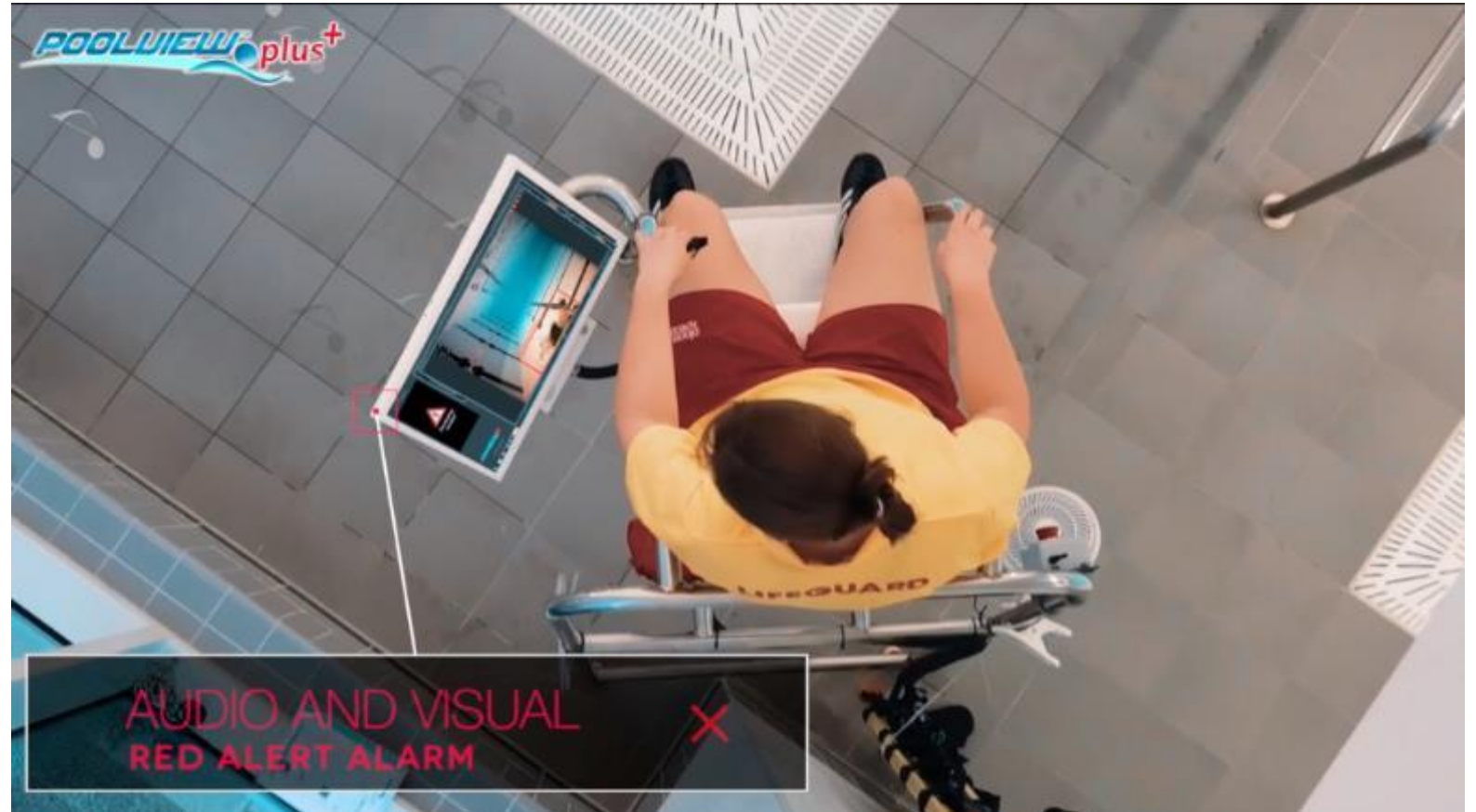
Option 2

CCTV
Technology



Option 3

Computer Vision Technology





Option 4

Do
Nothing!



Technology

- Technology is NOT infallible
- It reads data and does NOT have real eyes on the pool
- Poolview Plus+ will detect 75% of drownings incidents
- It will however detect 75% - 100% of the time
- They all pass the ISO Standard – but it is misleading!



“Lifeguards train all their working lives for something that may NEVER happen!”

Many believe that it won't or can't happen to them or here!

It is not about IF it happens – it is actually about WHEN!



The “Sully Factor”

A Rescue in 30 seconds?

This assumes ideal conditions and instantaneous decision-making, including a well-rehearsed team that knew exactly what was about to happen.



The “Sully Factor”

Every first responder gets preparation time. Police, Ambulance, Fire, RNLI - you name it, they all get preparation time.

Here’s the kicker... pool lifeguards don’t. When “the brown stuff hits the whirly thing”, it’s happening in front of you right now!

It’s all adrenaline, muscle memory and reflexes, no time for proper cognitive processing

Sully - 'Human Factor' Scene
Tom Hanks Amazing Acting

August 13, 2018

THE GORILLA IN YOUR POOL!

Robin McGloughlin · Water Safety



This is definitely not a Gorilla in the swimming pool!

Sometimes things just "hit you in the face" and you know you have to stick your head above the parapet and hopefully encourage some debate or fresh thinking.

Every week I visit *a lot of pools* the length and breadth of the country, encouraging others to consider the use of technology in their own swimming pools.

I often arrive with a little time to spare (and normally anonymously), grab a coffee and sit down with the laptop which I ignore and I watch the Lifeguards and the swimmers before I meet a member of

Latest from Twitter

Poolview Limited

RT @andyread52:
Could blended
lifeguarding save lives
using technology &
raise standard of
lifeguarding to next
level? Airports were...
<https://t.co/fcXauX9iAs>
3 weeks ago

Poolview Limited

Looking forward to
Queer 19
<https://t.co/BcDMhH359E>
3 weeks ago

Poolview Limited

Poolview Starts 2019
at the London
Aquatic Centre
<https://t.co/XtF8cHCMZe>
/London Aquatic



Why use Technology

- To SUPPORT Lifeguards and increase swimmer safety
- Majority of recorded drownings I see, show prior “normal” behaviour
- Majority of drownings I see, are preceded by a “medical event”
- There is still the belief – it won’t happen to me!
- Without Technology – we are setting Lifeguards up to fail!

BLENDING LIFEGUARDING

combines traditional methods of pool supervision, with technology driven drowning detection

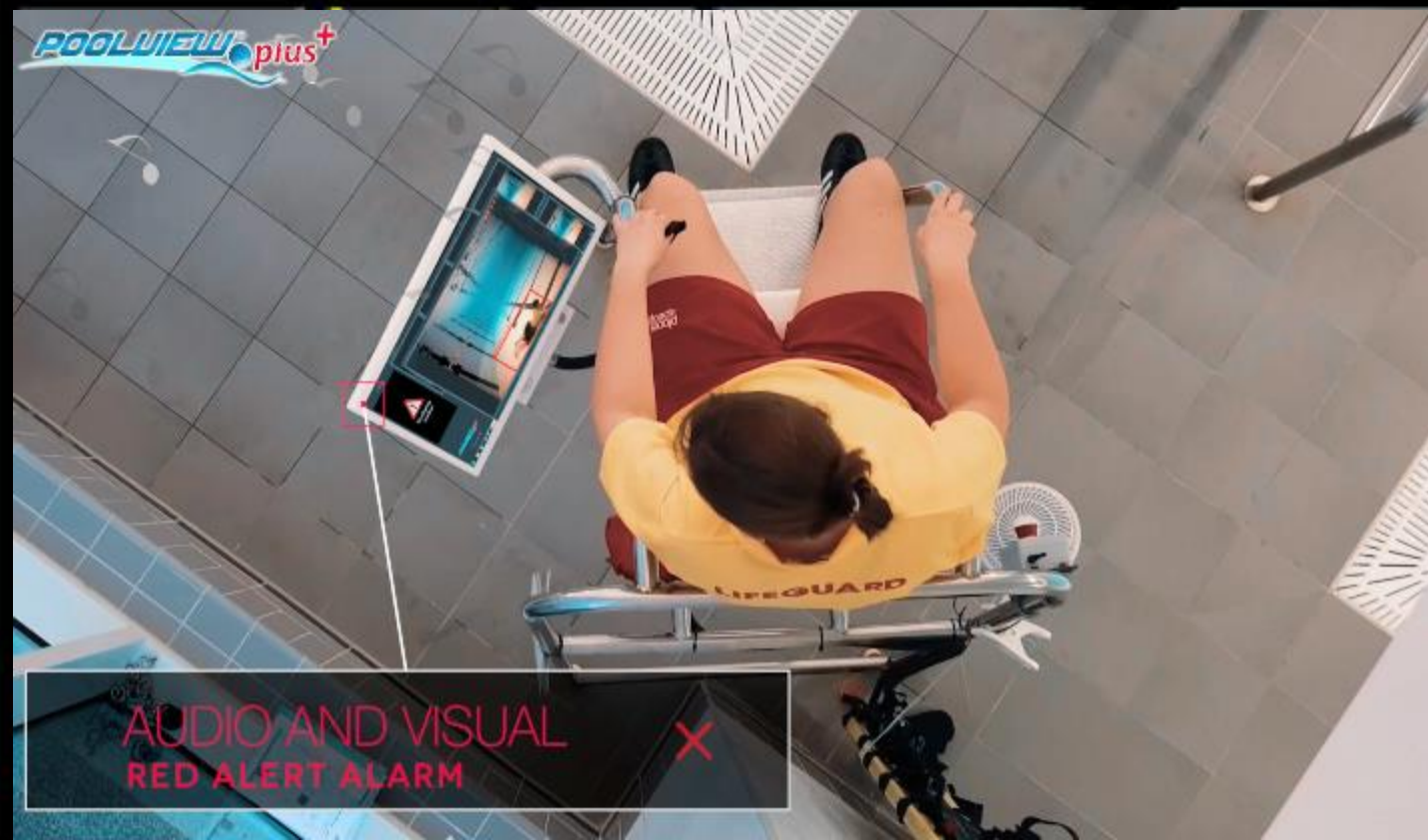




Lifeguard Monitor



Two Level **Lifeguard Alert** with Reset Button



ARE YOU CONSIDERING DROWNING
PREVENTION TECHNOLOGY WITHIN YOUR
NEW POOL DESIGN?

5 good reasons to include containment

POINT 01 Simplicity Itself

Niches can be cast into the pool structure when it's being made, thus protecting tank integrity



No drilling later

Conduit is also cast into the structure from the rear of the niche, permitting easy networking at a later date

POINT 02

POINT 03 Flush fitting

Niches installed during construction allow for a flush mount - can be blanked off easily if not required



Cost Effective

Including containment and cabling within the specification is more cost effective than a retro-fit

POINT 04

POINT 05 Choose Later

With containment included, you can decide at a later date what technology you want



POOLVIEW
Safer Swimming Systems

www.poolview.co.uk



“You can help prevent a drowning,
by preparing for a drowning”

**Do everything in your power to prevent it,
Then prepare yourself and your team like it is inevitable.”**



If you're not looking
for a gorilla, you won't
see a gorilla.

If you're not looking
for a drowning person
you won't see a
drowning person.





www.poolview.co.uk

robinmcgloughlin@poolview.co.uk

www.robinmcgloughlin.com

Helen Meckiffe

Head of Training

Right Directions

Helen.Meckiffe@rightrightdirections.co.uk

07956 585198

About Right Directions

Drawing from our in-depth knowledge and experience of sport, leisure and business we offer a wide range of services.

THESE INCLUDE...



- Quality Management System implementation and audit including safeguarding policies and procedures
- Management of the Quest NBS scheme for Sport England since 2010
- Assisting sites in achieving Investors in People, ISO9001, ISO14001, OHSAS18001, CHAS
- Health & Safety support service
- Health & Safety system implementation and auditing
- Primary Authority Partnership Co-ordinator approved by Secretary of State
- Mystery visits
- Management of ukactive, Swim England, Activity Alliance, STA & Streetgames external accreditations
- Environmental Management System implementation and audits
- On-line Accident Report tools, STITCH
- Training (including safeguarding, customer care, GDPR, health & safety and environmental)

Right Directions

Quality Support in Safe Hands



Swimming Pool Accidents 2019

8 – 11 year olds

40%

General Swimming

46%

Main Pool

57%

Return to activity

75%

Medical attention

11%

RIDDOR

1%

STITCH™ OF THE NATION

Right Directions

Quality Support in Safe Hands

What are our Lifeguards looking for?

Common 'obvious' traits of distress



Right Directions

Quality Support in Safe Hands



Schemas

**A mental framework that
develops from our
experiences with particular,
people, objects or events.**



Right Directions

Quality Support in Safe Hands



Schemas

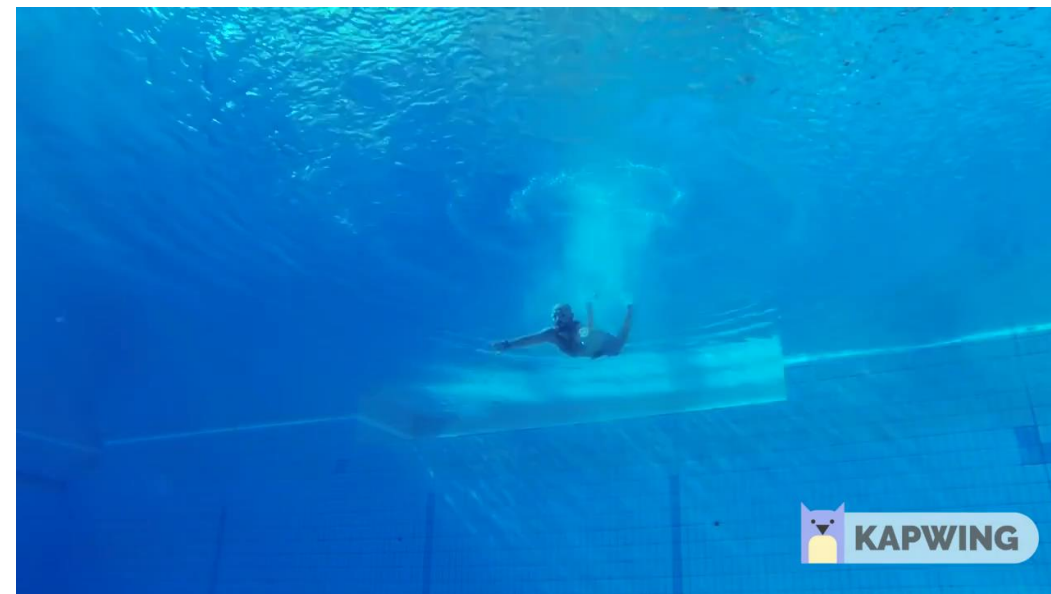
- Tell us how people, objects or events are most likely to act, behave or present themselves.
- Influence our attention and the absorption of new knowledge.
- More likely to notice things that fit into our schema.
- Understand and organise experiences, they can also aid memory and recall.
- Have a tendency to remain unchanged.

Right Directions

Quality Support in Safe Hands



Schemas

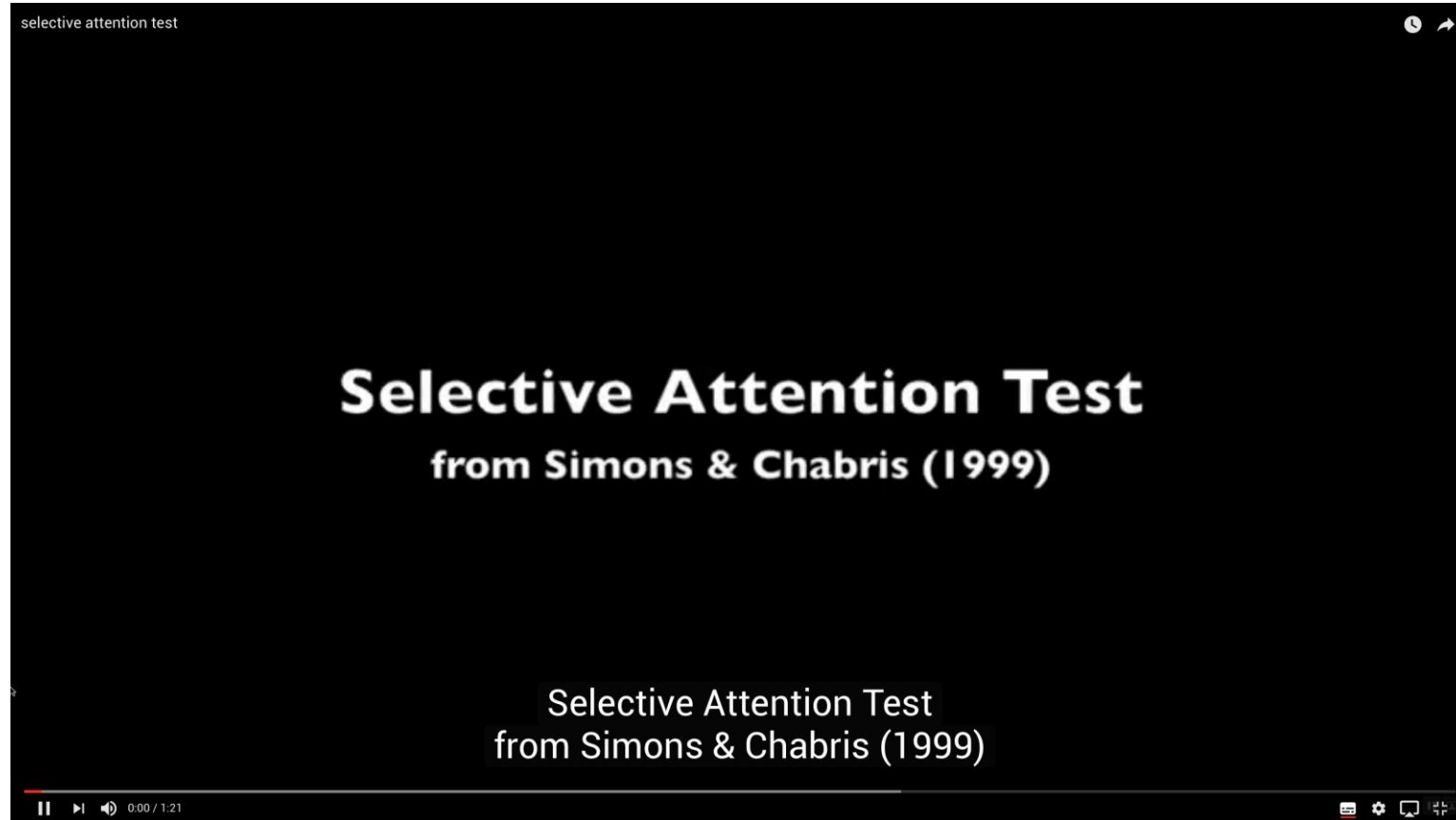


Right Directions

Quality Support in Safe Hands



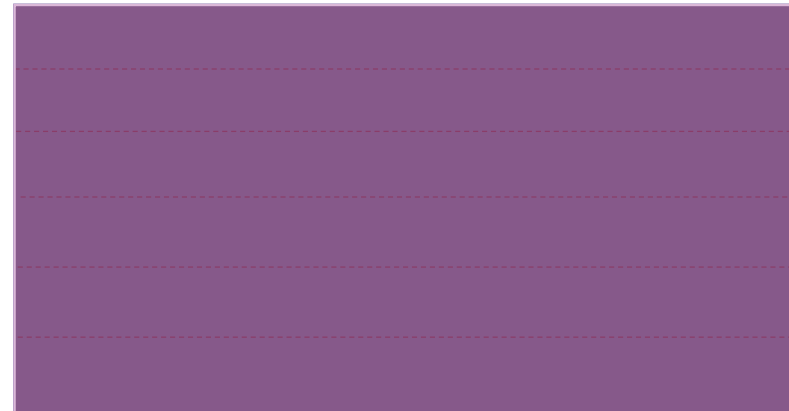
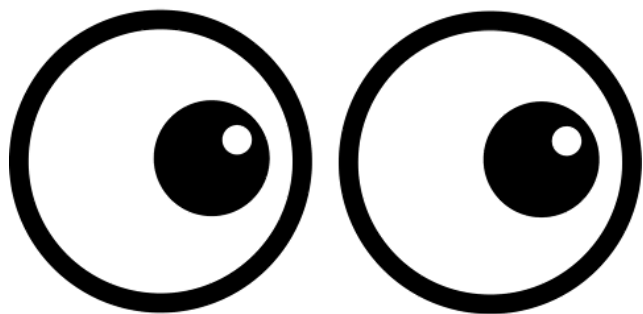
Inattention blindness



Right Directions

Quality Support in Safe Hands

Scanning



10:20

Right Directions

Quality Support in Safe Hands



10:20 System

- 1983 – creating an objective measure of Lifeguard standards
- Used to measure Lifeguard performance
- 1990's – 2003 research and training
- 'Scanning' vs. 'Seeing'
- Much more is involved in 'casualty recognition'

Right Directions

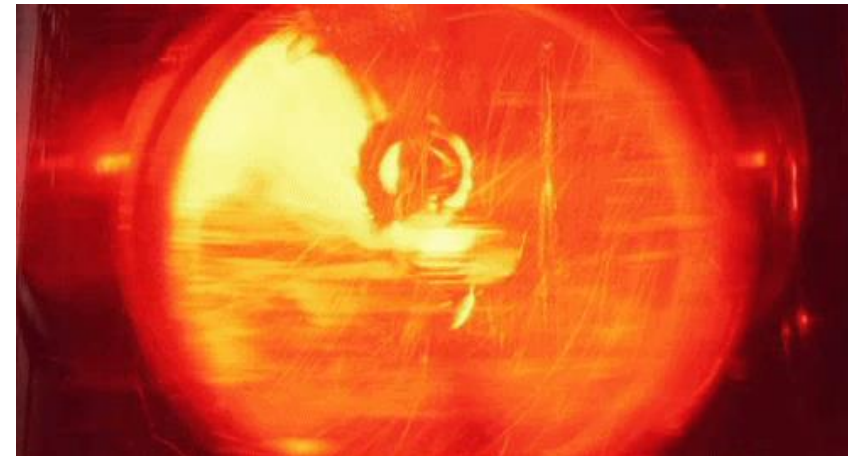
Quality Support in Safe Hands



Visual Awareness Training

Regular and unannounced drills are useful practices in maintaining a high level of aquatic readiness. These type of drills can help to reinforce victim recognition and scanning skills.

- **Scanning Drills**
 - Red Ball / Puck
- **Emergency & Training Drills**
 - Silhouette drills
 - Red Cap Drill



Right Directions

Quality Support in Safe Hands



It won't happen to me

- **No-one drowns**
- **Protected**
- **Training**
- **Textbook examples**



- **Drowning happens**
- **Legal onus**
- **Investigations**
- **PTSD**

Right Directions

Quality Support in Safe Hands



Summary

- If you are reviewing footage of incidents, your Lifeguard's performance or developing their training, these are all concepts you should be mindful of.
- Understanding the tools, processes and human factors are you giving your Lifeguards the best chance of success in an incident?

**THANK YOU FOR
LISTENING**

Right Directions

Quality Support in Safe Hands