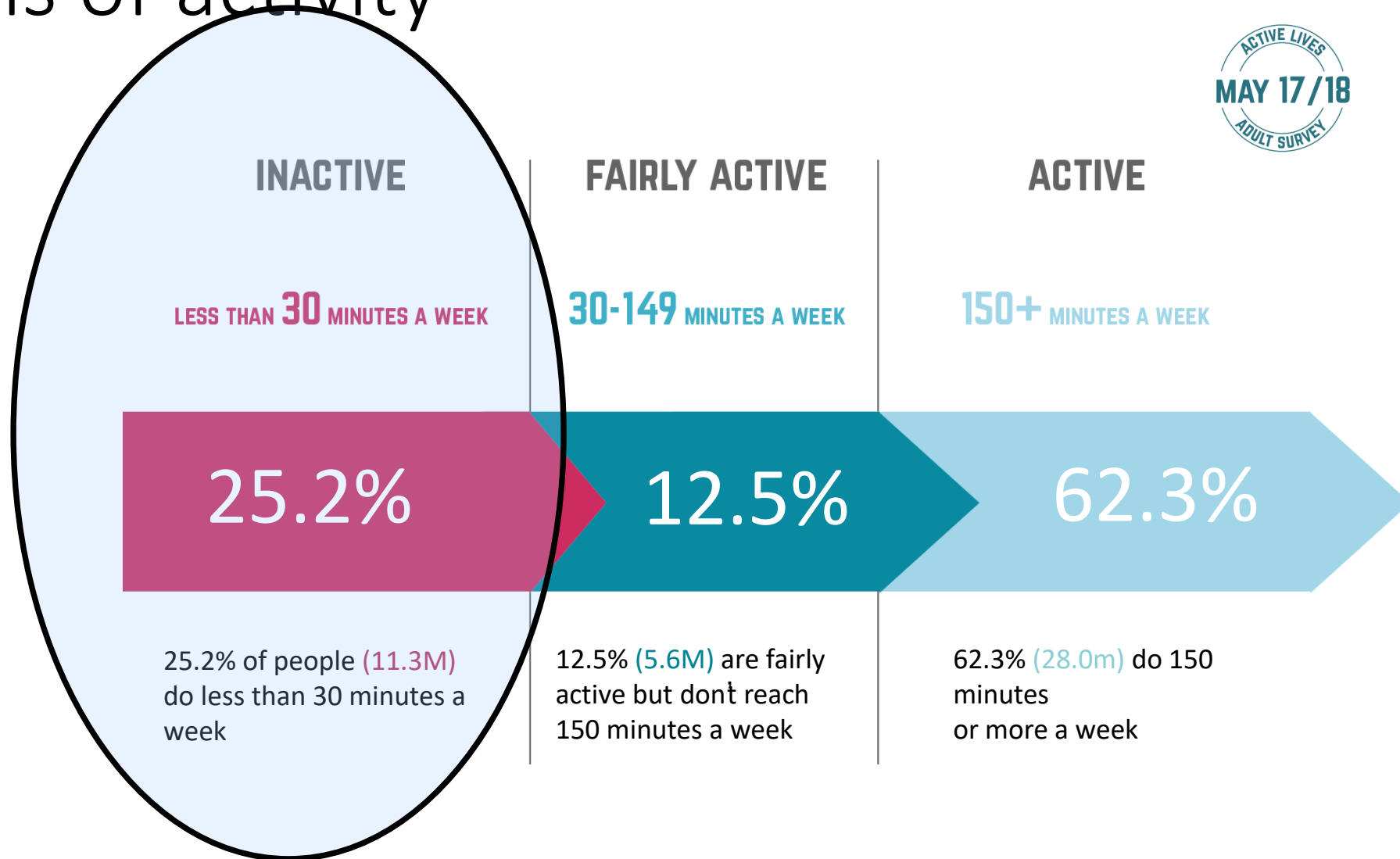


Strategic Update & Active Environments

Charles Johnston: Sport England

February 2019

Levels of activity

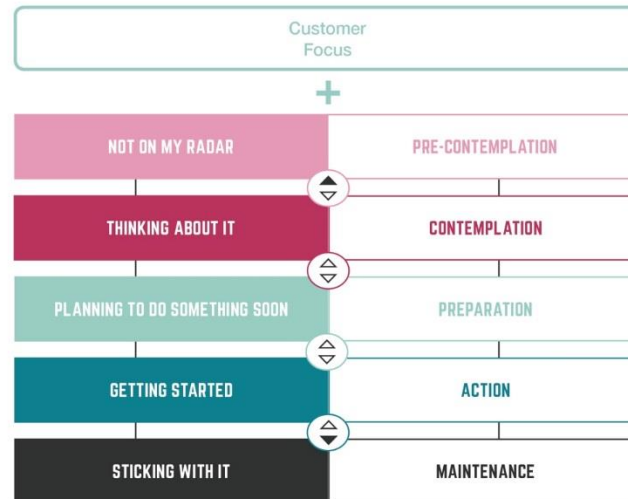


SPORT ENGLAND STRATEGY: TOWARDS AN ACTIVE NATION

OUTCOMES



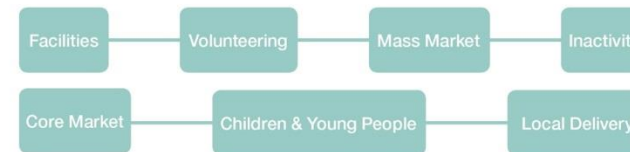
HOW WE THINK



HOW WE DECIDE



WHAT WE INVEST IN



UNDERPINNED BY









Look at environments collectively



Neighbourhoods

what conditions generate activity

- Walkability
- Streets and Active Travel
- Blue and Green Spaces



Walkability

- Compact neighbourhoods
 - Increased housing density
- Good street connectivity
- Co-location
- Mixed land use
- Public transport links



Streets & Active Travel

- Active travel infrastructure
- Public transport provision
- Street connectivity
- Road safety and road calming measures
- Exposure to air pollution



Blue & Green Spaces

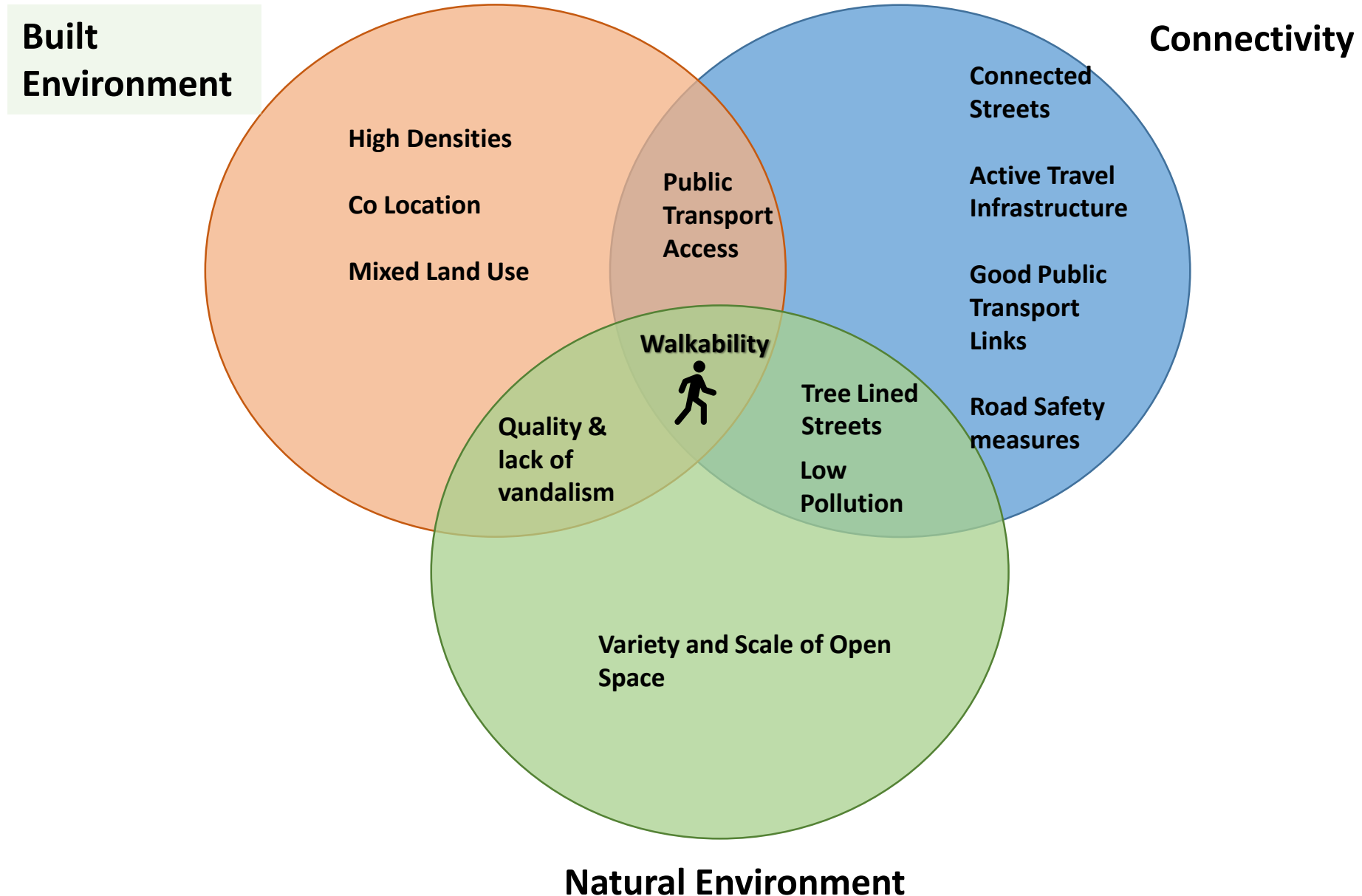
- Walkability

- Green infrastructure
 - Parks and open spaces
 - Routes and pathways

- Reduce air/noise pollution



The Environmental conditions that generate physical activity



Active Environments – In Practice

High Density Mixed Use

- Encourage more cycling and walking



Co- Location of formal sports facilities

- Linked into green grid & creation of seamless journeys



Accessible Parks

- Informal and formal physical activity
- Mix of amenities encourage activity and improve safety



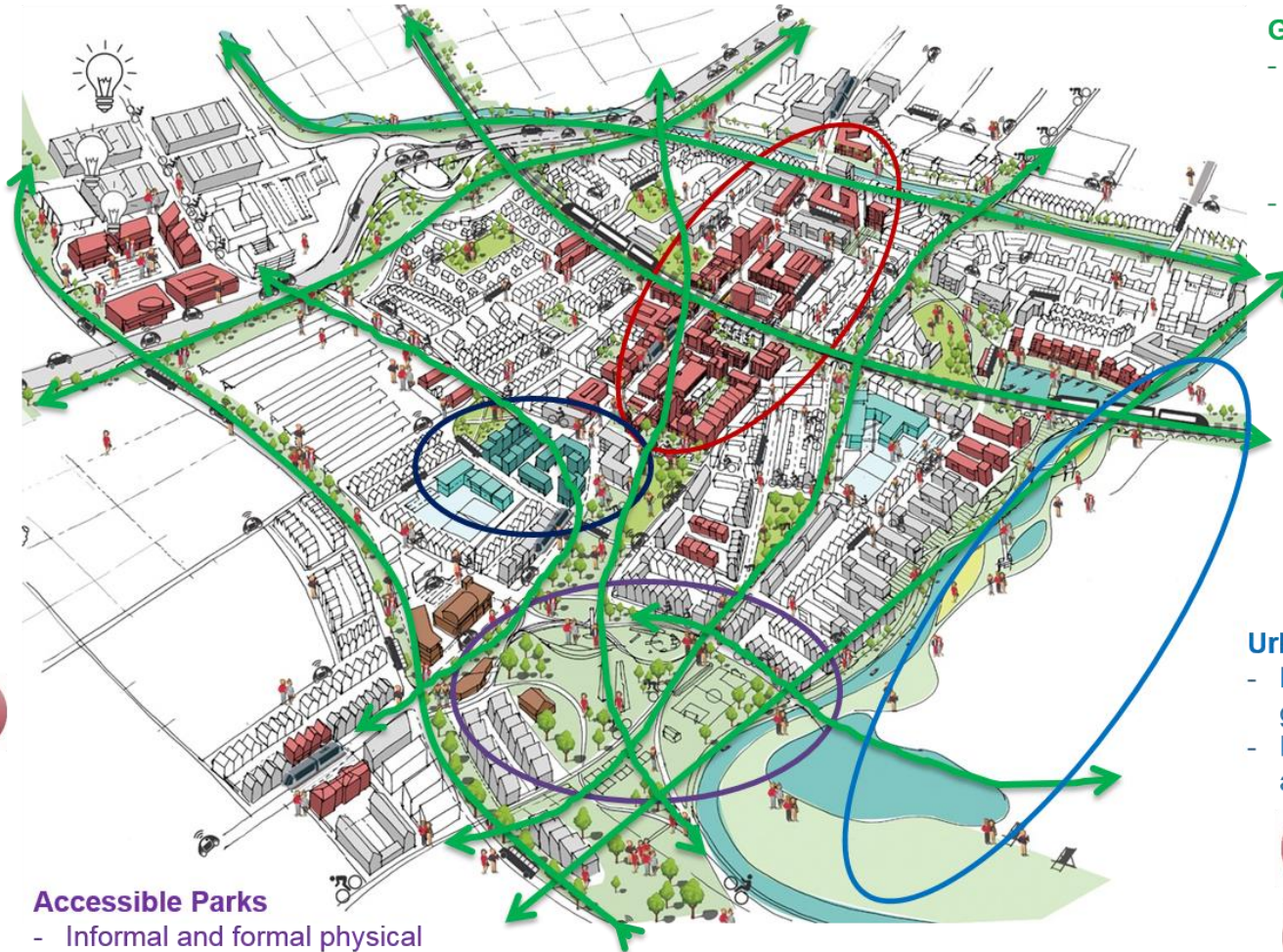
Green Grid

- Proximity to homes to provide access to green space for activity
- Underpins Active Travel



Urban Fringe

- Linked into green grid
- Informal physical activity



(Image courtesy of AJ – Barton Wilmore)



Greater range of facilities – more engagement and use

Extensive outdoor facilities

Library

Gym / fitness suite- with wellbeing assessments

GP Practice

Swimming Pool

Changing rooms

Crèche

Dance studio

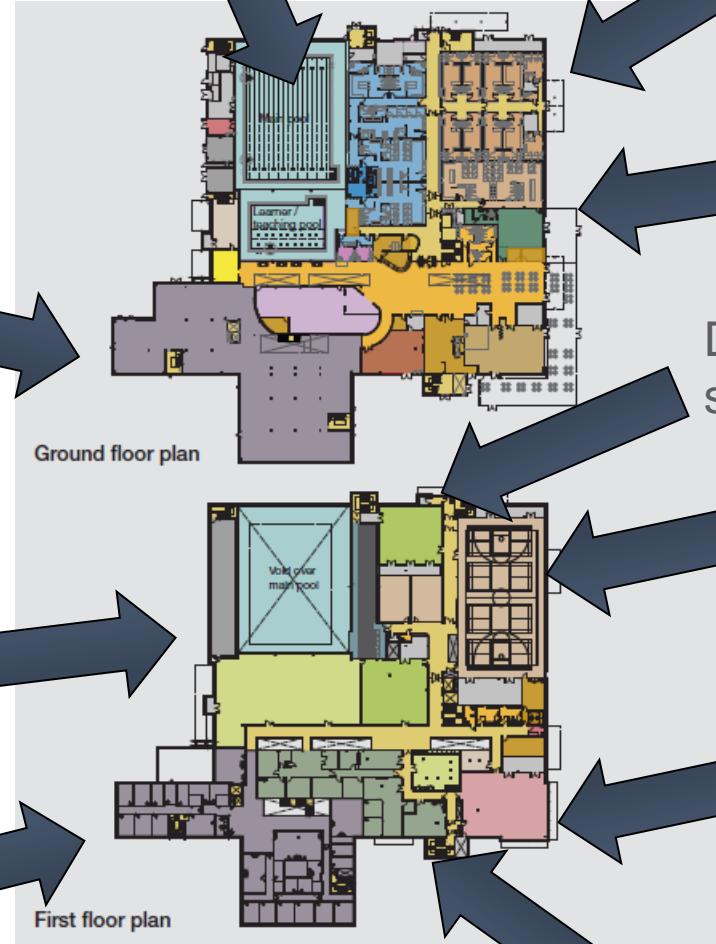
Sports hall and courts

Café/social area

Primary Care Trust Social Services

Ground floor plan

First floor plan



ORFORD JUBILEE PARK

WARRINGTON

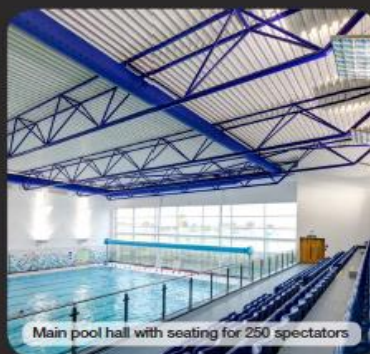
Status: Completed 2012
Client: Warrington Borough Council
Operator: LiveWire
Value: £28 million



Orford Jubilee Park is the biggest Olympic legacy site outside London. It represents the culmination of a 15-year project to develop a flagship community, leisure, health and education centre for Warrington. Officially opened by HRH Queen Elizabeth II on 17 May 2012, it is the first example of a sustainable community sports hub.

The project was developed through a unique partnership involving over twenty national, regional and local funding partners from the public, private and voluntary sectors and the 25-year lifecycle costs will be met from the *Community Investment Fund*.

Situated on a former landfill site next to a Victorian park, the development includes the private sector Decathlon retail unit and provides externally-lit pathways around the outdoor sports facilities and park.



Main pool hall with seating for 250 spectators

Visitor numbers for the new 'Hub' building are three times higher than the leisure centre it has replaced. Compared to the previous year, there has been a sevenfold increase in the numbers joining the library.



90 station health and fitness gym

Unique Features

The project is situated in a newly-created community park that is easily accessed from a number of established routes used by the wider community. It co-locates a variety of high-quality indoor and outdoor leisure facilities with a range of additional community services. This promotes inclusive and social regeneration on a single site in line with Warrington's regeneration strategy.



Main reception area with views through to external seating area and parkland beyond

Indoor leisure facilities include an 8 lane 25 m competition pool, a 15 x 9 m teaching pool with movable floor, two dance studios, a 4 court sports hall, an activity hall and a 90 station health and fitness gym. The community facilities comprise an education unit, a library, three GP surgeries, a Primary Care Trust (PCT) lifestyles team and a central café area with views on to the rear sports fields.



4 court sports hall

Outdoor leisure facilities include a full-size floodlit artificial football pitch, an enclosed five-a-side *Powerleague* centre, flat green bowls, a BMX and skateboard park and a campus-wide trim trail.



Ground floor plan



First floor plan

Key

Entrance	Pool hall	Library	Three-a-side	Sports hall/quest courts
Circulation	Spectator seating	Activity hall	Dance studio	Dry change (external sports)
Edge / Public toilets / Café	Hot change	Changing Places	PCT Lifestyle team	Dry change (internal sports)
Staff reception	Health suite	First aid	Cosco	Store
Conference / meeting	Doctor's surgery	Sports and health resources	Multi-use room	Plant / service void
				Lightwell

Conclusion

- Strategy is showing a wider impact of Sport and Physical Activity.
- Place is a significantly huge element.
- Active Environments is the approach we would like to see adopted.